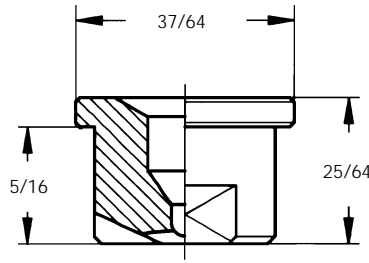


GX

FLAT-JET NOZZLES

LOW FLOW RATE TIPS



GX type flat-jet nozzle tips allow the jet to be oriented in a desired direction.

Nozzle tips are usually assembled on a pipe clamp or a nipple, and locked in place by means of a screw cap. (See below and the following page). The tips are easy to replace.

Their precision machined outlet orifices are best protected against clogging by using an internally fitted filter. (See below.)

Materials: See the table below.

| Nozzle code | Flow rates (gpm) at various pressures (psi) | | | | | | | | | | |
|-------------|---|-------|-------|-------|-------|-------|-------|-------|-------|-------|-------|
| | 5 | 10 | 20 | 30 | 40 | 60 | 80 | 100 | 200 | 300 | 500 |
| 0060xx | - | - | 0.011 | 0.013 | 0.015 | 0.019 | 0.022 | 0.024 | 0.034 | 0.042 | 0.054 |
| 0100xx | - | - | 0.018 | 0.022 | 0.026 | 0.031 | 0.036 | 0.040 | 0.057 | 0.070 | 0.090 |
| 0130xx | - | - | 0.023 | 0.029 | 0.033 | 0.041 | 0.047 | 0.052 | 0.074 | 0.091 | 0.12 |
| 0200xx | - | 0.026 | 0.036 | 0.044 | 0.051 | 0.063 | 0.072 | 0.081 | 0.11 | 0.14 | 0.18 |
| 0260xx | - | 0.033 | 0.047 | 0.057 | 0.066 | 0.081 | 0.094 | 0.10 | 0.15 | 0.18 | 0.23 |
| 0390xx | - | 0.050 | 0.070 | 0.086 | 0.10 | 0.12 | 0.14 | 0.16 | 0.22 | 0.27 | 0.35 |
| 0590xx | - | 0.075 | 0.11 | 0.13 | 0.15 | 0.18 | 0.21 | 0.24 | 0.34 | 0.41 | 0.53 |
| 0780xx | 0.070 | 0.10 | 0.14 | 0.17 | 0.20 | 0.24 | 0.28 | 0.31 | 0.45 | 0.55 | 0.70 |
| 1120xx | 0.11 | 0.15 | 0.22 | 0.27 | 0.31 | 0.38 | 0.43 | 0.48 | 0.68 | 0.84 | 1.08 |
| 1160xx | 0.14 | 0.20 | 0.29 | 0.35 | 0.41 | 0.50 | 0.58 | 0.65 | 0.91 | 1.1 | 1.4 |

| Nozzle code | Flow rates (gpm) at various pressures (psi) | | | | | | | | | | |
|-------------|---|-------|-------|-------|-------|-------|-------|-------|-------|-------|-------|
| | 5 | 10 | 20 | 30 | 40 | 60 | 80 | 100 | 200 | 300 | 500 |
| 0060xx | - | - | 0.011 | 0.013 | 0.015 | 0.019 | 0.022 | 0.024 | 0.034 | 0.042 | 0.054 |
| 0100xx | - | - | 0.018 | 0.022 | 0.026 | 0.031 | 0.036 | 0.040 | 0.057 | 0.070 | 0.090 |
| 0130xx | - | - | 0.023 | 0.029 | 0.033 | 0.041 | 0.047 | 0.052 | 0.074 | 0.091 | 0.12 |
| 0150xx | - | 0.017 | 0.024 | 0.030 | 0.035 | 0.042 | 0.049 | 0.055 | 0.077 | 0.095 | 0.12 |
| 0200xx | - | 0.026 | 0.036 | 0.044 | 0.051 | 0.063 | 0.072 | 0.081 | 0.11 | 0.14 | 0.18 |
| 0260xx | - | 0.033 | 0.047 | 0.057 | 0.066 | 0.081 | 0.094 | 0.10 | 0.15 | 0.18 | 0.23 |
| 0390xx | - | 0.050 | 0.070 | 0.086 | 0.10 | 0.12 | 0.14 | 0.16 | 0.22 | 0.27 | 0.35 |
| 0590xx | - | 0.075 | 0.11 | 0.13 | 0.15 | 0.18 | 0.21 | 0.24 | 0.34 | 0.41 | 0.53 |
| 0780xx | 0.07 | 0.10 | 0.14 | 0.17 | 0.20 | 0.24 | 0.28 | 0.31 | 0.45 | 0.55 | 0.70 |
| 1120xx | 0.11 | 0.15 | 0.22 | 0.27 | 0.31 | 0.38 | 0.43 | 0.48 | 0.68 | 0.84 | 1.08 |
| 1160xx | 0.14 | 0.20 | 0.29 | 0.35 | 0.41 | 0.50 | 0.58 | 0.65 | 0.91 | 1.1 | 1.4 |

MATERIALS

| MATERIAL | 0060 | 0100 | 0130 | 0150 | 0200 | 0260 | 0390 | 0590 | 0780 | 1120 | 1160 |
|-------------|------|------|------|------|------|------|------|------|------|------|------|
| BRASS (T1) | • | • | • | • | • | • | • | • | • | • | • |
| 303 SS (B1) | - | - | - | - | • | • | • | • | • | • | • |

Filters of the type shown to the above right can be fitted inside the nipple of a nozzle for protection.

Polypropylene clamps and molded caps, shown at the right, offer convenience in assembling GX nozzle tips onto pipes.

See the Accessories section of this catalog for information on filters, pipe clamps, and caps.

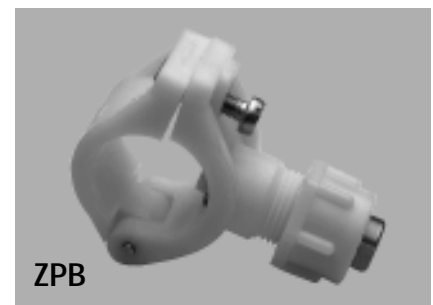
Composing a code for low flow rate GX nozzle tips

The nozzle tips shown on this page can be supplied with eight different spray angles as shown in the table below. Angles are designated by the third digit in the nozzle code. For example,

GXS 0260 B1

75° spray angle

| CODE | ANGLE |
|------|-------|
| GXD | 25° |
| GXL | 40° |
| GXN | 50° |
| GXR | 65° |
| GXS | 75° |
| GXT | 80° |
| GXV | 95° |
| GXJ | 110° |



STANDARD FLOW RATE TIPS

GX standard flow rate nozzle tips can be used with the same accessories shown on the previous page.

37/64

Materials: Brass (T1)
303 stainless steel (B1)
316 stainless steel (B3)

25/64

5/16



HYDRAULIC NOZZLES
FLAT-JET

Composing a code for standard flow rate GX nozzle tips

The nozzle tips shown on this page can be supplied with six different spray angles as shown in the table below. Angles are designated by the third digit in the nozzle code. For example,

GXQ 1780 B3

60° spray angle

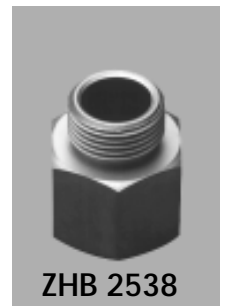
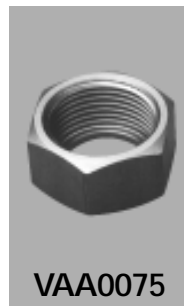
| CODE | ANGLE |
|------|-------|
| GXA | 0° |
| GXF | 30° |
| GXM | 45° |
| GXQ | 60° |
| GXU | 90° |
| GXW | 120° |

| GXA | GXF | GXM | Nozzle code | D | Flow rates (gpm) at various pressures (psi) | | | | | | | | | | |
|-----|-----|-----|-------------|-------|---|------|------|------|------|------|------|------|------|------|------|
| | | | | | 5 | 10 | 20 | 30 | 40 | 60 | 80 | 100 | 200 | 300 | 500 |
| • | • | • | 1190xx | 0.059 | - | 0.24 | 0.34 | 0.42 | 0.48 | 0.59 | 0.69 | 0.77 | 1.1 | 1.3 | 1.7 |
| • | • | • | 1233xx | 0.065 | - | 0.30 | 0.42 | 0.52 | 0.59 | 0.73 | 0.84 | 0.94 | 1.3 | 1.6 | 2.1 |
| • | • | • | 1310xx | 0.079 | 0.28 | 0.40 | 0.56 | 0.69 | 0.79 | 0.97 | 1.1 | 1.3 | 1.8 | 2.2 | 2.8 |
| • | • | • | 1385xx | 0.087 | 0.35 | 0.49 | 0.69 | 0.85 | 0.98 | 1.2 | 1.4 | 1.6 | 2.2 | 2.7 | 3.5 |
| • | • | • | 1490xx | 0.098 | 0.4 | 0.6 | 0.9 | 1.1 | 1.3 | 1.5 | 1.8 | 2.0 | 2.8 | 3.4 | 4.4 |
| • | • | • | 1581xx | 0.106 | 0.5 | 0.7 | 1.0 | 1.3 | 1.5 | 1.8 | 2.1 | 2.3 | 3.3 | 4.1 | 5.2 |
| • | • | • | 1780xx | 0.118 | 0.7 | 1.0 | 1.4 | 1.7 | 2.0 | 2.4 | 2.8 | 3.1 | 4.5 | 5.5 | 7.0 |
| • | • | • | 1980xx | 0.138 | 0.9 | 1.3 | 1.8 | 2.2 | 2.5 | 3.1 | 3.5 | 4.0 | 5.6 | 6.9 | 8.8 |
| • | • | • | 2124xx | 0.157 | 1.1 | 1.6 | 2.2 | 2.7 | 3.2 | 3.9 | 4.5 | 5.0 | 7.1 | 8.7 | 11.2 |
| • | • | • | 2153xx | 0.177 | 1.4 | 2.0 | 2.8 | 3.4 | 3.9 | 4.8 | 5.5 | 6.2 | 8.7 | 10.7 | 13.8 |
| • | • | • | 2194xx | 0.197 | 1.8 | 2.5 | 3.5 | 4.3 | 5.0 | 6.1 | 7.0 | 7.8 | 11.1 | 13.6 | 17.5 |
| • | • | • | 2245xx | 0.216 | 2.2 | 3.1 | 4.4 | 5.4 | 6.3 | 7.7 | 8.8 | 9.9 | 14.0 | 17.1 | 22.1 |

| GXA | GXU | GXW | Nozzle code | D | Flow rates (gpm) at various pressures (psi) | | | | | | | | | | |
|-----|-----|-----|-------------|-------|---|------|------|------|------|------|------|------|------|------|------|
| | | | | | 5 | 10 | 20 | 30 | 40 | 60 | 80 | 100 | 200 | 300 | 500 |
| • | • | • | 1190xx | 0.059 | - | 0.24 | 0.34 | 0.42 | 0.48 | 0.59 | 0.69 | 0.77 | 1.1 | 1.3 | 1.7 |
| • | • | • | 1233xx | 0.065 | - | 0.30 | 0.42 | 0.52 | 0.59 | 0.73 | 0.84 | 0.94 | 1.3 | 1.6 | 2.1 |
| • | • | • | 1310xx | 0.079 | 0.28 | 0.40 | 0.56 | 0.69 | 0.79 | 0.97 | 1.1 | 1.3 | 1.8 | 2.2 | 2.8 |
| • | • | • | 1385xx | 0.087 | 0.35 | 0.49 | 0.69 | 0.85 | 0.98 | 1.2 | 1.4 | 1.6 | 2.2 | 2.7 | 3.5 |
| • | • | • | 1490xx | 0.098 | 0.44 | 0.63 | 0.9 | 1.1 | 1.3 | 1.5 | 1.8 | 2.0 | 2.8 | 3.4 | 4.4 |
| • | • | • | 1581xx | 0.106 | 0.52 | 0.7 | 1.0 | 1.3 | 1.5 | 1.8 | 2.1 | 2.3 | 3.3 | 4.1 | 5.2 |
| • | • | • | 1780xx | 0.118 | 0.7 | 1.0 | 1.4 | 1.7 | 2.0 | 2.4 | 2.8 | 3.1 | 4.5 | 5.5 | 7.0 |
| • | • | • | 1980xx | 0.138 | 0.9 | 1.3 | 1.8 | 2.2 | 2.5 | 3.1 | 3.5 | 4.0 | 5.6 | 6.9 | 8.8 |
| • | • | • | 2124xx | 0.157 | 1.1 | 1.6 | 2.2 | 2.7 | 3.2 | 3.9 | 4.5 | 5.0 | 7.1 | 8.7 | 11.2 |
| • | • | • | 2153xx | 0.177 | 1.4 | 2.0 | 2.8 | 3.4 | 3.9 | 4.8 | 5.5 | 6.2 | 8.7 | 10.7 | 13.8 |
| • | • | • | 2194xx | 0.197 | 1.8 | 2.5 | 3.5 | 4.3 | 5.0 | 6.1 | 7.0 | 7.8 | 11.1 | 13.6 | 17.5 |
| • | • | • | 2245xx | 0.216 | 2.2 | 3.1 | 4.4 | 5.4 | 6.3 | 7.7 | 8.8 | 9.9 | 14.0 | 17.1 | 22.1 |

Shown on the right are typical components used in the assembly of a nozzle tip; a screw cap and a welding nipple.

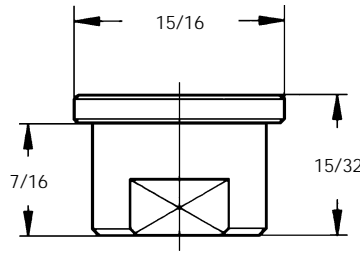
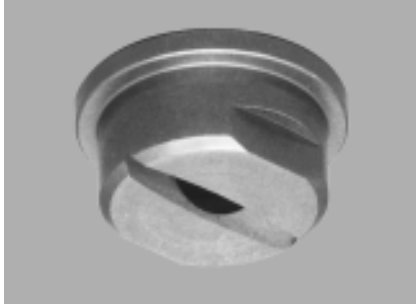
Other types of nipples, as well as a range of plastic pipe clamps, are shown in the Accessories section of this catalog or contact us for further information.



GX

FLAT-JET NOZZLES

LARGE FLOW RATE TIPS



The **GX** high flow rate nozzle tips deliver the largest output in the GX series.

Their assembly requires a nipple and locknut, as described below.

| Nozzle angle | Nozzle code | D | D1 | Flow rates (gpm) at various pressures (psi) | | | | | | | | | | | |
|--------------|--------------|-------|-------|---|------|------|------|------|------|------|------|------|------|------|--|
| | | | | 5 | 10 | 20 | 30 | 40 | 60 | 80 | 100 | 200 | 300 | 500 | |
| 30° | GXF 2154 xx | 0.177 | 0.138 | 1.4 | 2.0 | 2.8 | 3.4 | 3.9 | 4.8 | 5.6 | 6.2 | 8.8 | 10.8 | 13.9 | |
| | GXF 2195 xx | 0.197 | 0.157 | 1.8 | 2.5 | 3.5 | 4.3 | 5.0 | 6.1 | 7.0 | 7.8 | 11.1 | 13.6 | 17.5 | |
| | GXF 2246 xx | 0.217 | 0.165 | 2.2 | 3.1 | 4.4 | 5.4 | 6.3 | 7.7 | 8.9 | 9.9 | 14.0 | 17.2 | 22.2 | |
| | GXF 2311 xx | 0.237 | 0.197 | 2.8 | 4.0 | 5.6 | 6.9 | 7.9 | 9.7 | 11.2 | 12.6 | 17.8 | 21.7 | 28.1 | |
| | GXF 2490 xx | 0.315 | 0.252 | 4.4 | 6.3 | 8.8 | 10.8 | 12.5 | 15.3 | 17.7 | 19.8 | 28.0 | 34.3 | 44.2 | |
| | GXF 2610 xx | 0.354 | 0.283 | 5.5 | 7.8 | 11.0 | 13.5 | 15.6 | 19.1 | 22.0 | 24.6 | 34.8 | 42.6 | 55.0 | |
| | GXF 2760 xx | 0.393 | 0.323 | 6.9 | 9.7 | 13.7 | 16.8 | 19.4 | 23.8 | 27.4 | 30.7 | 43.4 | 53.1 | 68.6 | |
| 45° | GXM 1781 xx | 0.118 | 0.094 | 0.70 | 1.0 | 1.4 | 1.7 | 2.0 | 2.4 | 2.8 | 3.2 | 4.5 | 5.5 | 7.0 | |
| | GXM 1981 xx | 0.138 | 0.102 | 0.89 | 1.3 | 1.8 | 2.2 | 2.5 | 3.1 | 3.5 | 4.0 | 5.6 | 6.9 | 8.9 | |
| | GXM 2125 xx | 0.157 | 0.118 | 1.1 | 1.6 | 2.3 | 2.8 | 3.2 | 3.9 | 4.5 | 5.0 | 7.1 | 8.7 | 11.3 | |
| | GXM 2154 xx | 0.177 | 0.134 | 1.4 | 2.0 | 2.8 | 3.4 | 3.9 | 4.8 | 5.6 | 6.2 | 8.8 | 10.8 | 13.9 | |
| | GXM 2195 xx | 0.197 | 0.150 | 1.8 | 2.5 | 3.5 | 4.3 | 5.0 | 6.1 | 7.0 | 7.9 | 11.1 | 13.6 | 17.6 | |
| | GXM 2246 xx | 0.217 | 0.165 | 2.2 | 3.1 | 4.4 | 5.4 | 6.3 | 7.7 | 8.9 | 9.9 | 14.0 | 17.2 | 22.2 | |
| | GXM 2311 xx | 0.236 | 0.185 | 2.8 | 4.0 | 5.6 | 6.9 | 7.9 | 9.7 | 11.2 | 12.6 | 17.8 | 21.7 | 28.1 | |
| | GXM 2490 xx | 0.315 | 0.232 | 4.4 | 6.3 | 8.8 | 10.8 | 12.5 | 15.3 | 17.7 | 19.8 | 28.0 | 34.3 | 44.2 | |
| | GXM 2610 xx | 0.354 | 0.252 | 5.5 | 7.8 | 11.0 | 13.5 | 15.6 | 19.1 | 22.0 | 24.6 | 34.8 | 42.6 | 55.0 | |
| | GXM 2760 xx | 0.393 | 0.291 | 6.9 | 9.7 | 13.7 | 16.8 | 19.4 | 23.8 | 27.4 | 30.7 | 43.4 | 53.1 | 68.6 | |
| | GXM 3122 xx | 0.472 | 0.386 | 11.0 | 15.6 | 22.0 | 27.0 | 31.1 | 38.1 | 44.0 | 49.2 | 69.6 | 85.3 | 110 | |
| 60° | GXQ 1781 xx | 0.118 | 0.083 | 0.70 | 1.0 | 1.4 | 1.7 | 2.0 | 2.4 | 2.8 | 3.2 | 4.5 | 5.5 | 7.0 | |
| | GXQ 1981 xx | 0.138 | 0.091 | 0.89 | 1.3 | 1.8 | 2.2 | 2.5 | 3.1 | 3.5 | 4.0 | 5.6 | 6.9 | 8.9 | |
| | GXQ 2125 xx | 0.157 | 0.106 | 1.1 | 1.6 | 2.3 | 2.8 | 3.2 | 3.9 | 4.5 | 5.0 | 7.1 | 8.7 | 11.3 | |
| | GXQ 2154 xx | 0.177 | 0.118 | 1.4 | 2.0 | 2.8 | 3.4 | 3.9 | 4.8 | 5.6 | 6.2 | 8.8 | 10.8 | 13.9 | |
| | GXQ 2195 xx | 0.197 | 0.134 | 1.8 | 2.5 | 3.5 | 4.3 | 5.0 | 6.1 | 7.0 | 7.9 | 11.1 | 13.6 | 17.6 | |
| | GXQ 2246 xx | 0.217 | 0.161 | 2.2 | 3.1 | 4.4 | 5.4 | 6.3 | 7.7 | 8.9 | 9.9 | 14.0 | 17.2 | 22.2 | |
| | GXQ 2311 xx | 0.236 | 0.169 | 2.8 | 4.0 | 5.6 | 6.9 | 7.9 | 9.7 | 11.2 | 12.6 | 17.8 | 21.7 | 28.1 | |
| | GXQ 2490 xx | 0.315 | 0.216 | 4.4 | 6.3 | 8.8 | 10.8 | 12.5 | 15.3 | 17.7 | 19.8 | 28.0 | 34.3 | 44.2 | |
| | GXQ 2610 xx | 0.354 | 0.244 | 5.5 | 7.8 | 11.0 | 13.5 | 15.6 | 19.1 | 22.0 | 24.6 | 34.8 | 42.6 | 55.0 | |
| | GXQ 2760 xx | 0.393 | 0.291 | 6.9 | 9.7 | 13.7 | 16.8 | 19.4 | 23.8 | 27.4 | 30.7 | 43.4 | 53.1 | 68.6 | |
| GXQ 3122 xx | 0.472 | 0.374 | 11.0 | 15.6 | 22.0 | 27.0 | 31.1 | 38.1 | 44.0 | 49.2 | 69.6 | 85.3 | 110 | | |
| 90° | G XU 1781 xx | 0.118 | 0.067 | 0.70 | 1.0 | 1.4 | 1.7 | 2.0 | 2.4 | 2.8 | 3.2 | 4.5 | 5.5 | 7.0 | |
| | G XU 1981 xx | 0.138 | 0.075 | 0.89 | 1.3 | 1.8 | 2.2 | 2.5 | 3.1 | 3.5 | 4.0 | 5.6 | 6.9 | 8.9 | |
| | G XU 2125 xx | 0.157 | 0.087 | 1.1 | 1.6 | 2.3 | 2.8 | 3.2 | 3.9 | 4.5 | 5.0 | 7.1 | 8.7 | 11.3 | |
| | G XU 2154 xx | 0.177 | 0.095 | 1.4 | 2.0 | 2.8 | 3.4 | 3.9 | 4.8 | 5.6 | 6.2 | 8.8 | 10.8 | 13.9 | |
| | G XU 2195 xx | 0.197 | 0.122 | 1.8 | 2.5 | 3.5 | 4.3 | 5.0 | 6.1 | 7.0 | 7.9 | 11.1 | 13.6 | 17.6 | |
| | G XU 2246 xx | 0.217 | 0.142 | 2.2 | 3.1 | 4.4 | 5.4 | 6.3 | 7.7 | 8.9 | 9.9 | 14.0 | 17.2 | 22.2 | |
| | G XU 2311 xx | 0.236 | 0.153 | 2.8 | 4.0 | 5.6 | 6.9 | 7.9 | 9.7 | 11.2 | 12.6 | 17.8 | 21.7 | 28.1 | |
| | G XU 2490 xx | 0.315 | 0.177 | 4.4 | 6.3 | 8.8 | 10.8 | 12.5 | 15.3 | 17.7 | 19.8 | 28.0 | 34.3 | 44.2 | |
| | G XU 2610 xx | 0.354 | 0.193 | 5.5 | 7.8 | 11.0 | 13.5 | 15.6 | 19.1 | 22.0 | 24.6 | 34.8 | 42.6 | 55.0 | |
| | G XU 2760 xx | 0.393 | 0.256 | 6.9 | 9.7 | 13.7 | 16.8 | 19.4 | 23.8 | 27.4 | 30.7 | 43.4 | 53.1 | 68.6 | |
| | G XU 3122 xx | 0.472 | 0.342 | 11.0 | 15.6 | 22.0 | 27.0 | 31.1 | 38.1 | 44.0 | 49.2 | 69.6 | 85.3 | 110 | |
| 120° | G XW 1781 xx | 0.118 | 0.063 | 0.70 | 1.0 | 1.4 | 1.7 | 2.0 | 2.4 | 2.8 | 3.2 | 4.5 | 5.5 | 7.0 | |
| | G XW 1981 xx | 0.138 | 0.067 | 0.89 | 1.3 | 1.8 | 2.2 | 2.5 | 3.1 | 3.5 | 4.0 | 5.6 | 6.9 | 8.9 | |
| | G XW 2125 xx | 0.157 | 0.079 | 1.1 | 1.6 | 2.3 | 2.8 | 3.2 | 3.9 | 4.5 | 5.0 | 7.1 | 8.7 | 11.3 | |
| | G XW 2154 xx | 0.177 | 0.090 | 1.4 | 2.0 | 2.8 | 3.4 | 3.9 | 4.8 | 5.6 | 6.2 | 8.8 | 10.8 | 13.9 | |
| | G XW 2195 xx | 0.197 | 0.102 | 1.8 | 2.5 | 3.5 | 4.3 | 5.0 | 6.1 | 7.0 | 7.9 | 11.1 | 13.6 | 17.6 | |
| | G XW 2246 xx | 0.217 | 0.114 | 2.2 | 3.1 | 4.4 | 5.4 | 6.3 | 7.7 | 8.9 | 9.9 | 14.0 | 17.2 | 22.2 | |
| | G XW 2311 xx | 0.236 | 0.126 | 2.8 | 4.0 | 5.6 | 6.9 | 7.9 | 9.7 | 11.2 | 12.6 | 17.8 | 21.7 | 28.1 | |
| | G XW 2490 xx | 0.315 | 0.173 | 4.4 | 6.3 | 8.8 | 10.8 | 12.5 | 15.3 | 17.7 | 19.8 | 28.0 | 34.3 | 44.2 | |
| | G XW 2610 xx | 0.354 | 0.189 | 5.5 | 7.8 | 11.0 | 13.5 | 15.6 | 19.1 | 22.0 | 24.6 | 34.8 | 42.6 | 55.0 | |
| | G XW 2760 xx | 0.393 | 0.224 | 6.9 | 9.7 | 13.7 | 16.8 | 19.4 | 23.8 | 27.4 | 30.7 | 43.4 | 53.1 | 68.6 | |
| | G XW 3122 xx | 0.472 | 0.295 | 11.0 | 15.6 | 22.0 | 27.0 | 31.1 | 38.1 | 44.0 | 49.2 | 69.6 | 85.3 | 110 | |

The following accessories are available for the assemblies shown on this page. (See the Accessories section for further information):

- Locknut **VAA0038 xx**
- Welding nipple **ZAA 2775 xx**
- Female nipple **ZHB 7575 xx**
- Male nipple **ZLB 7575 xx**