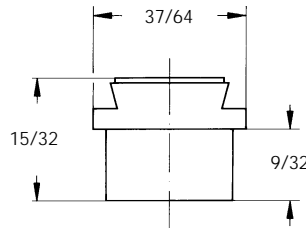


STANDARD FLOW RATE DOVETAIL TIPS (SIZE 1: 3/8" PIPE)

GY flat-jet nozzle tips, in addition to being easily replaceable, offer the additional feature of fixed orientation. This stems from the dovetail profile on the tip and a matching profile on the nipple.

GY tips are available in three sizes, two of which are shown in this catalog. A larger tip size can be quoted on request.

See the next page for material availability.



Composing a code for standard flow rate GY dovetail nozzle tips

The nozzle tips shown on this page can be supplied with five different spray angles as shown in the table below. Angles are designated by the third digit in the nozzle code. For example,

GYU 1780 B3 xx
90° spray angle

CODE	ANGLE
GYF	30°
GYM	45°
GYQ	60°
GYU	90°
GYW	120°

GYF	GYM	Nozzle code	D	Flow rates (gpm) at various pressures (psi)										
				10	20	30	40	60	80	100	200	300	500	
•	•	0490xx	0.031	-	-	0.11	0.13	0.15	0.18	0.20	0.28	0.34	0.44	
•	•	0780xx	0.039	-	-	0.17	0.20	0.24	0.28	0.31	0.45	0.55	0.70	
•	•	1124xx	0.047	-	0.22	0.27	0.32	0.39	0.45	0.50	0.71	0.87	1.1	
•	•	1153xx	0.053	-	0.28	0.34	0.39	0.48	0.55	0.62	0.87	1.1	1.4	
•	•	1190xx	0.059	-	0.34	0.42	0.48	0.59	0.69	0.77	1.1	1.3	1.7	
•	•	1233xx	0.065	-	0.42	0.52	0.59	0.73	0.84	0.94	1.3	1.6	2.1	
•	•	1310xx	0.079	0.40	0.56	0.69	0.79	0.97	1.1	1.3	1.8	2.2	2.8	
•	•	1385xx	0.087	0.49	0.69	0.85	0.98	1.2	1.4	1.6	2.2	2.7	3.5	
•	•	1490xx	0.098	0.63	0.88	1.1	1.3	1.5	1.8	2.0	2.8	3.4	4.4	
•	•	1581xx	0.106	0.74	1.0	1.3	1.5	1.8	2.1	2.3	3.3	4.1	5.2	
•	•	1780xx	0.119	1.0	1.4	1.7	2.0	2.4	2.8	3.1	4.5	5.5	7.0	
•	•	1980xx	0.138	1.3	1.8	2.2	2.5	3.1	3.5	4.0	5.6	6.9	8.8	
•	•	2124xx	0.157	1.6	2.2	2.7	3.2	3.9	4.5	5.0	7.1	8.7	11.2	
•	•	2153xx	0.177	2.0	2.8	3.4	3.9	4.8	5.5	6.2	8.7	10.7	13.8	
•	•	2194xx	0.197	2.5	3.5	4.3	5.0	6.1	7.0	7.8	11.1	13.6	17.5	

GYO	GYU	GYW	Nozzle code	D	Flow rates (gpm) at various pressures (psi)										
					10	20	30	40	60	80	100	200	300	500	
•	•	•	0490xx	0.031	-	-	0.11	0.13	0.15	0.18	0.20	0.28	0.34	0.44	
•	•	•	0780xx	0.039	-	-	0.17	0.20	0.24	0.28	0.31	0.45	0.55	0.70	
•	•	•	1124xx	0.047	-	0.22	0.27	0.32	0.39	0.45	0.50	0.71	0.87	1.1	
•	•	•	1153xx	0.053	-	0.28	0.34	0.39	0.48	0.55	0.62	0.87	1.1	1.4	
•	•	•	1190xx	0.059	-	0.34	0.42	0.48	0.59	0.69	0.77	1.1	1.3	1.7	
•	•	•	1233xx	0.065	-	0.42	0.52	0.59	0.73	0.84	0.94	1.3	1.6	2.1	
•	•	•	1310xx	0.079	0.40	0.56	0.69	0.79	0.97	1.1	1.3	1.8	2.2	2.8	
•	•	•	1385xx	0.087	0.49	0.69	0.85	0.98	1.2	1.4	1.6	2.2	2.7	3.5	
•	•	•	1490xx	0.098	0.63	0.88	1.1	1.3	1.5	1.8	2.0	2.8	3.4	4.4	
•	•	•	1581xx	0.106	0.74	1.0	1.3	1.5	1.8	2.1	2.3	3.3	4.1	5.2	
•	•	•	1780xx	0.119	1.0	1.4	1.7	2.0	2.4	2.8	3.1	4.5	5.5	7.0	
•	•	•	1980xx	0.138	1.3	1.8	2.2	2.5	3.1	3.5	4.0	5.6	6.9	8.8	
•	•	•	2124xx	0.157	1.6	2.2	2.7	3.2	3.9	4.5	5.0	7.1	8.7	11.2	
•	•	•	2153xx	0.177	2.0	2.8	3.4	3.9	4.8	5.5	6.2	8.7	10.7	13.8	
•	•	•	2194xx	0.197	2.5	3.5	4.3	5.0	6.1	7.0	7.8	11.1	13.6	17.5	

GY type tips are assembled onto their own series of matching dovetail nipples, to assure perfect alignment.

The two different sizes of tips require nipples and caps as shown in the table below.

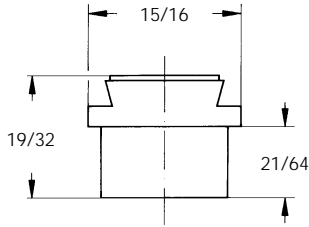
SIZE	RF	CAP	NIPPLE
Size 1	3/8"	VAA 0038 xx	ZAC 1738 xx
Size 2	3/4"	VAA 0075 xx	ZAC 2775 xx



GY

FLAT-JET NOZZLES

LARGE FLOW RATE DOVETAIL TIPS (SIZE 2: 3/4" PIPE)



These size 2 **GY** dovetail nozzle tips offer high flow rates, up to 31 gpm at a pressure of 40 psi.

They are easily assembled using the matching dovetail nipples shown on the previous page.

GYF	GYM	Nozzle code	D	Flow rates (gpm) at various pressures (psi)									
				10	20	30	40	60	80	100	200	300	500
•	•	1781xx	0.118	1.0	1.4	1.7	2.0	2.4	2.8	3.1	4.5	5.5	7.0
•	•	1981xx	0.138	1.3	1.8	2.2	2.5	3.1	3.5	4.0	5.6	6.9	8.8
•	•	2125xx	0.158	1.6	2.2	2.7	3.2	3.9	4.5	5.0	7.1	8.7	11.2
•	•	2154xx	0.178	2.0	2.8	3.4	3.9	4.8	5.5	6.2	8.7	1.07	13.8
•	•	2195xx	0.198	2.5	3.5	4.3	5.0	6.1	7.0	7.8	11.1	13.6	17.5
•	•	2246xx	0.218	3.1	4.4	5.4	6.3	7.7	8.9	9.9	14.0	17.2	22.2
•	•	2311xx	0.238	4.0	5.6	6.9	7.9	9.7	11.2	12.6	17.8	21.7	28.1
•	•	2490xx	0.315	6.3	8.8	10.8	12.5	15.3	17.7	19.8	28.0	34.3	44.2
•	•	2610xx	0.354	7.8	11.0	13.5	15.6	19.1	22.0	24.6	34.8	42.6	55.0
•	•	2760xx	0.393	9.7	13.7	16.8	19.4	23.8	27.4	30.7	43.4	53.1	68.6
•	•	3122xx	0.472	15.6	22.0	27.0	31.1	38.1	44.0	49.2	69.6	85.3	110

GYC	GYU	GYW	Nozzle code	D	10	20	30	40	60	80	100	200	300	500
•	•	•	1781xx	0.118	1.0	1.4	1.7	2.0	2.4	2.8	3.1	4.5	5.5	7.0
•	•	•	1981xx	0.138	1.3	1.8	2.2	2.5	3.1	3.5	4.0	5.6	6.9	8.8
•	•	•	2125xx	0.158	1.6	2.2	2.7	3.2	3.9	4.5	5.0	7.1	8.7	11.2
•	•	•	2154xx	0.178	2.0	2.8	3.4	3.9	4.8	5.5	6.2	8.7	10.7	13.8
•	•	•	2195xx	0.198	2.5	3.5	4.3	5.0	6.1	7.0	7.8	11.1	13.6	17.5
•	•	•	2246xx	0.218	3.1	4.4	5.4	6.3	7.7	8.9	9.9	14.0	17.2	22.2
•	•	•	2311xx	0.238	4.0	5.6	6.9	7.9	9.7	11.2	12.6	17.8	21.7	28.1
•	•	•	2490xx	0.315	6.3	8.8	10.8	12.5	15.3	17.7	19.8	28.0	34.3	44.2
•	•	•	2610xx	0.354	7.8	11.0	13.5	15.6	19.1	22.0	24.6	34.8	42.6	55.0
•	•	•	2760xx	0.393	9.7	13.7	16.8	19.4	23.8	27.4	30.7	43.4	53.1	68.6
•	•	•	3122xx	0.472	15.6	22.0	27.0	31.1	38.1	44.0	49.2	69.6	85.3	110

Both GY tips sizes listed in this catalog (and their assembly fittings) are available in the materials listed below.

MATERIALS

ITEM	MILD STEEL (A1)	BRASS (T1)	303 SS (B1)	316 SS (B3)
TIP		•	•	•
CAP		•	•	•
NIPPLE	•		•	•