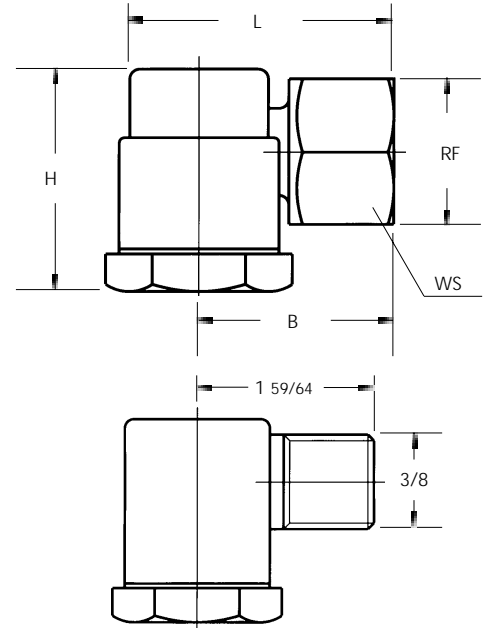
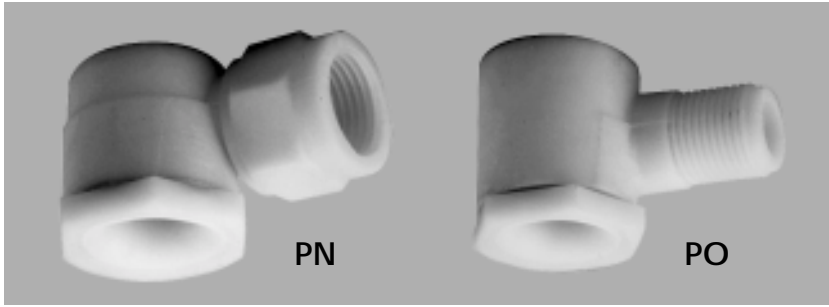


# PN/PO

## HOLLOW-CONE NOZZLES

### MOLDED PLASTIC



Molded plastic **PN/PO** type nozzles function identically to those in the PA/PB and PE/PF series.

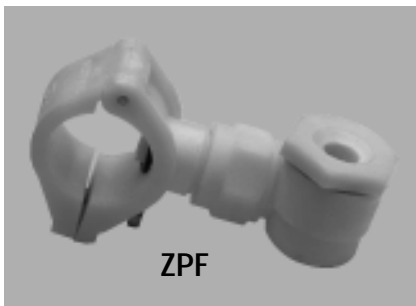
When used together with PNR pipe clamps, such as the model shown below, they offer excellent corrosion resistance and easy assembly.

Maximum operating temperature: 90° C

Connection: PN (female thread)  
PO (male thread)

Material: Fiberglass reinforced polypropylene (D6)

Nozzle code	RF/RG	D2	D3	Flow rates (gpm) at various pressures (psi)											Dimensions								
				3	5	7	10	20	30	40	60	80	100	150	WS	B	H	L					
70°	<b>PNS 1170 xx SN</b>	3/8"	0.098	0.098	0.12	0.15	0.18	0.22	0.31	0.38	0.43	0.53	0.61	0.69	0.84	31/32"	17/64"	119/64"	137/64"				
80°	<b>PNT 1260 xx SN</b>		0.126	0.126	0.18	0.23	0.28	0.33	0.47	0.57	0.66	0.81	0.94	1.0	1.3								
90°	<b>PNU 1390 xx SN</b>		0.157	0.157	0.27	0.35	0.42	0.50	0.70	0.86	1.0	1.2	1.4	1.6	1.9								
	<b>PNU 1670 xx SN</b>	0.193	0.193	0.47	0.60	0.72	0.86	1.2	1.5	1.7	2.1	2.4	2.7	3.3									
	<b>PNU 1850 xx SN</b>	0.220	0.220	0.59	0.77	0.91	1.1	1.5	1.9	2.2	2.7	3.1	3.4	4.2									
	<b>PNU 2115 xx SN</b>	0.248	0.248	0.80	1.0	1.2	1.5	2.1	2.5	2.9	3.6	4.2	4.6	5.7									
	<b>PNU 2220 xx SN</b>	0.315	0.315	1.5	2.0	2.3	2.8	4.0	4.9	5.6	6.9	7.9	8.9	10.9									
130°	<b>PNY 1170 xx SN</b>	1/2"	0.067	0.138	0.12	0.15	0.18	0.22	0.31	0.38	0.43	0.53	0.61	0.69	0.84					19/32"	117/32"	147/64"	131/32"
	<b>PNY 1260 xx SN</b>		0.087	0.197	0.18	0.23	0.28	0.33	0.47	0.57	0.66	0.81	0.94	1.0	1.3								
	<b>PNY 1390 xx SN</b>		0.122	0.197	0.27	0.35	0.42	0.50	0.70	0.86	1.0	1.2	1.4	1.6	1.9								
	<b>PNY 1460 xx SN</b>		0.138	0.197	0.32	0.42	0.49	0.59	0.83	1.0	1.2	1.4	1.7	1.9	2.3								
	<b>PNY 1570 xx SN</b>		0.126	0.295	0.40	0.51	0.61	0.73	1.0	1.3	1.5	1.8	2.1	2.3	2.8								
	<b>PNY 1670 xx SN</b>		0.146	0.295	0.47	0.60	0.72	0.86	1.2	1.5	1.7	2.1	2.4	2.7	3.3								
	<b>PNY 1850 xx SN</b>		0.157	0.295	0.59	0.77	0.91	1.1	1.5	1.9	2.2	2.7	3.1	3.4	4.2								
	<b>PNY 1980 xx SN</b>		0.150	0.472	0.69	0.88	1.0	1.3	1.8	2.2	2.5	3.1	3.5	4.0	4.8								
	<b>PNY 2128 xx SN</b>		0.161	0.472	0.89	1.16	1.4	1.6	2.3	2.8	3.3	4.0	4.6	5.2	6.3								
	<b>PNY 2208 xx SN</b>		0.220	0.472	1.5	1.9	2.2	2.7	3.8	4.6	5.3	6.5	7.5	8.4	10.3								
<b>PNY 2220 xx SN</b>	0.230	0.472	1.5	2.0	2.3	2.8	4.0	4.9	5.6	6.9	7.9	8.9	10.9										
<b>PNY 1981 xx SN</b>	1/2"	0.142	0.551	0.69	0.88	1.0	1.3	1.8	2.2	2.5	3.1	3.5	4.0	4.8	19/32"	117/32"	147/64"	131/32"					
<b>PNY 2129 xx SN</b>		0.169	0.551	0.89	1.2	1.4	1.6	2.3	2.8	3.3	4.0	4.6	5.2	6.3									
<b>PNY 2209 xx SN</b>		0.228	0.551	1.5	1.9	2.2	2.7	3.8	4.6	5.3	6.5	7.5	8.4	10.3									
<b>PNY 2221 xx SN</b>		0.248	0.551	1.5	2.0	2.3	2.8	4.0	4.9	5.6	6.9	7.9	8.9	10.9									
<b>PNY 2320 xx SN</b>		0.307	0.551	2.2	2.9	3.4	4.1	5.8	7.1	8.2	10.0	11.6	12.9	15.8									
<b>PNY 2420 xx SN</b>	0.362	0.551	2.9	3.8	4.5	5.4	7.6	9.3	10.7	13.1	15.2	17.0	20.8										



ZPF clamps are an effective means to attach type PN nozzles to pipes.

Refer to the Accessories section of this catalog for details.