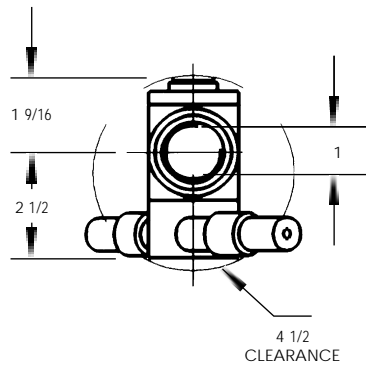
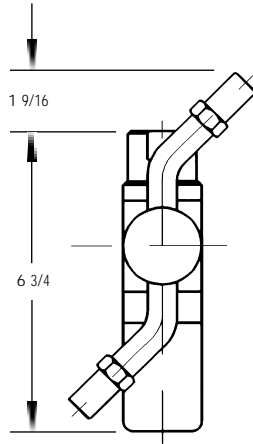


## TANK WASHING

### DUAL-AXIS ROTARY WASHERS SPEED CONTROLLED



UBL type tank washer nozzles are dual-axis rotary types featuring limited rotational speed that allows the jets to remain as a solid stream, yielding maximum impact forces and a long throw. Tanks up to 20 feet in diameter can be efficiently washed.

These nozzles employ the best and most advanced technology available today for tank washing.

The dual-axis design provides optimum wetting of tank interiors because of jet rotation about both the vertical and horizontal axes. By properly synchronizing the two motions, the impact zone on the walls is slightly displaced between successive rotations. This assures that every point on the wall will be impacted, resulting in superior scrubbing and cleaning actions.

UBL nozzles use a patented positive drive piston to retard the rotation generated by the reaction forces of the jets and maintains both the vertical and horizontal speeds at a synchronized, constant value.

The nozzles are designed to assure hygienic operation. The outer 316 stainless steel surface is highly polished and easily cleaned. No lubricants are used in the drive mechanism, avoiding any possibility of contamination.

Connection: Female thread

Materials: Body and internal metal parts: 316 stainless steel

Seals: Teflon (PTFE)

| Nozzle code | Flow rates (gpm) at various pressures (psi) |    |    |     |     | Angle AA | Max. Throw MT | Weight W |
|-------------|---|----|----|-----|-----|----------|---------------|----------|
|             | 30  | 45 | 75 | 105 | 150 |          |               |          |
| UBL 2750    | 16  | 20 | 26 | 30  | 36  | 360      | 320"          | 4.4      |
| UBL 3115    | 25  | 30 | 39 | 46  | 54  | 360      | 320"          | 4.4      |