

UF

SPECIAL PURPOSE PRODUCTS

FELT WASHING SHOWERS



UF pipes are designed for washing rotary felts in paper mills.

They have the following features:

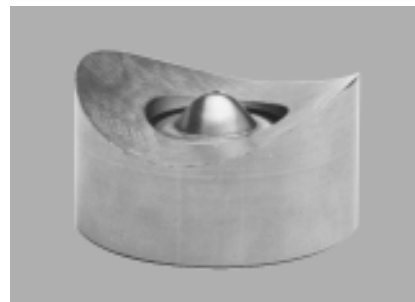
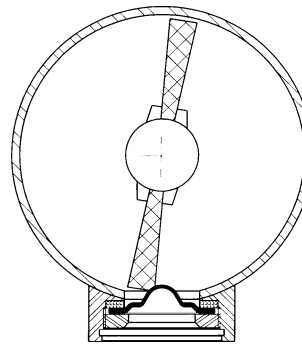
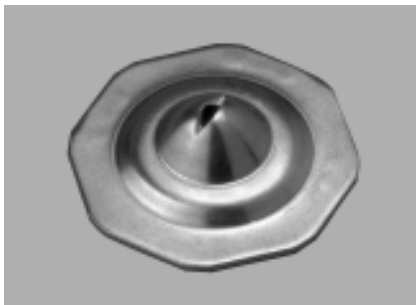
- High impact disc nozzles.
- Easy nozzle cleaning. An internal brush, shaft-mounted, cleans all the nozzles simultaneously with a few turns of the handwheel.
- Flushing of the interior. A flush valve connected to a nipple at the bottom of the inlet tee assembly makes it possible to flush away solids from the inside when used in conjunction with the internal brush.

UF pipes are manufactured to length in order to accommodate various widths.

Please consult us prior to ordering so that we can specify the proper configuration for your application.

Materials: 304 stainless steel (Pipe, nipples, nozzles, retaining caps, tee assembly and internal brush)
Aluminum (handwheel body)
Bakelite (handwheel lining)

VIEW OF THE INTERNAL BRUSH



The **GE** type disc nozzles used in these pipes are designed to provide a high impact fan spray to promote highly efficient washing action. The nozzles are positioned so that their orifices protrude into the interior of the pipe, thereby making it easy to clean them with the internal brush.

See the following page for a more detailed description of type GE nozzles.