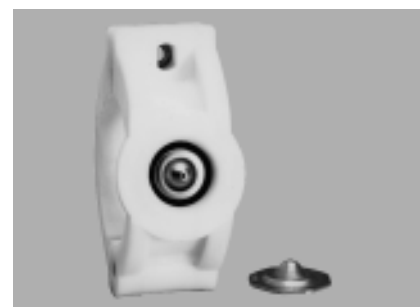
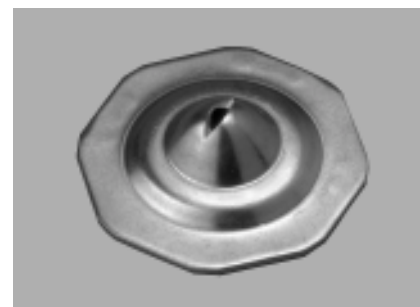
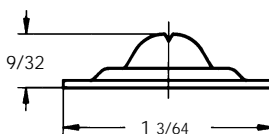


GE type disc nozzles are specially designed to provide a thin, flat, high-impact spray for applications such as felt washing in paper making machines.

Best results are obtained when used in conjunction with the welding nipple and retaining ring designed specifically for this nozzle.

Material: 304 stainless steel (B2)



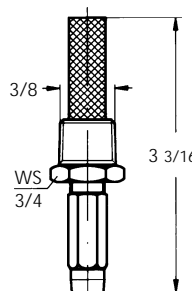
The polypropylene clamp shown above simplifies installation of disc washing nozzles on spray pipes. This clamp has been designed for use on sludge dewatering conveyors.

| | Nozzle code | D | Flow rates (gpm) at various pressures (psi) | | | | | | |
|-----|-------------|-------|---|------|------|------|------|------|------|
| | | | 40 | 60 | 80 | 100 | 150 | 200 | 300 |
| 0° | GEA0500B2 | 0.031 | 0.13 | 0.16 | 0.18 | 0.20 | 0.25 | 0.29 | 0.35 |
| | GEA0900B2 | 0.039 | 0.23 | 0.28 | 0.32 | 0.36 | 0.44 | 0.51 | 0.63 |
| | GEA1130B2 | 0.047 | 0.33 | 0.41 | 0.47 | 0.52 | 0.64 | 0.74 | 0.91 |
| | GEA1170B2 | 0.059 | 0.43 | 0.53 | 0.61 | 0.69 | 0.84 | 0.97 | 1.2 |
| | GEA1310B2 | 0.079 | 0.79 | 0.97 | 1.1 | 1.3 | 1.5 | 1.8 | 2.2 |
| 60° | GEO1170B2 | 0.059 | 0.43 | 0.53 | 0.61 | 0.69 | 0.84 | 0.97 | 1.2 |
| | GEO1310B2 | 0.079 | 0.79 | 0.97 | 1.1 | 1.3 | 1.5 | 1.8 | 2.2 |
| | GEO1490B2 | 0.098 | 1.3 | 1.5 | 1.8 | 2.0 | 2.4 | 2.8 | 3.4 |
| | GEO1780B2 | 0.118 | 2.0 | 2.4 | 2.8 | 3.1 | 3.9 | 4.5 | 5.5 |
| | GEO2124B2 | 0.157 | 3.2 | 3.9 | 4.5 | 5.0 | 6.1 | 7.1 | 8.7 |
| | GEO2194B2 | 0.197 | 5.0 | 6.1 | 7.0 | 7.8 | 9.6 | 11.1 | 13.6 |

UE

PAPER SIDE CUTTER

| | Nozzle code | D | Flow rates (gpm) at various pressures (psi) | | | | | | |
|----|-------------|-------|---|------|------|------|------|------|------|
| | | | 40 | 60 | 80 | 100 | 150 | 200 | 300 |
| 0° | UEA0170T1SN | 0.016 | 0.04 | 0.05 | 0.06 | 0.07 | 0.08 | 0.10 | 0.12 |
| | UEA0290T1SN | 0.020 | 0.07 | 0.09 | 0.10 | 0.12 | 0.14 | 0.17 | 0.20 |
| | UEA0320T1SN | 0.024 | 0.08 | 0.10 | 0.12 | 0.13 | 0.16 | 0.18 | 0.22 |
| | UEA0570T1SN | 0.029 | 0.15 | 0.18 | 0.21 | 0.23 | 0.28 | 0.33 | 0.40 |
| | UEA0860T1SN | 0.035 | 0.22 | 0.27 | 0.31 | 0.35 | 0.43 | 0.49 | 0.60 |
| | UEA1100T1SN | 0.093 | 0.26 | 0.31 | 0.36 | 0.40 | 0.49 | 0.57 | 0.70 |
| | UEA1185T1SN | 0.049 | 0.47 | 0.58 | 0.67 | 0.75 | 0.91 | 1.1 | 1.3 |
| | UEA1270T1SN | 0.059 | 0.69 | 0.84 | 0.97 | 1.1 | 1.3 | 1.5 | 1.9 |



UE type nozzles are designed specifically for the side-cutting operation used on paper making machines. The long nozzle tip together with the precision ground orifice produce a forceful straight spray.

A filter with a large surface is provided to ensure uninterrupted operation.

Connection: 3/8" male thread

Material: Sapphire (orifice)
Brass (body)
304 stainless steel (filter)