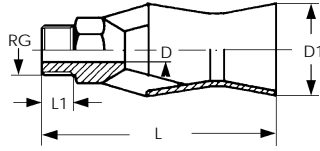


SPECIAL PURPOSE PRODUCTS

EDUCTOR NOZZLES

UPB



UPB eductor nozzles are used for continuous agitation of liquids contained in tanks when settling or local density variations are unacceptable. Typically, eductors can increase the circulation rate for a small pump by a factor of 4 because of the shape of the outlet venturi, which spreads the output over a large area.

These eductors are cast or molded in one piece, with ample thickness, resulting in a strong, durable product.

The stainless steel versions are often used for steam heating processes in water tanks. The plastic types offer excellent chemical resistance.

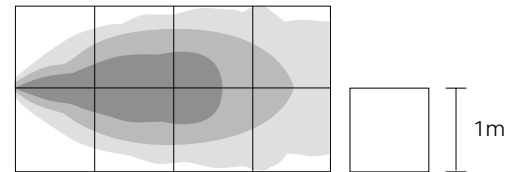
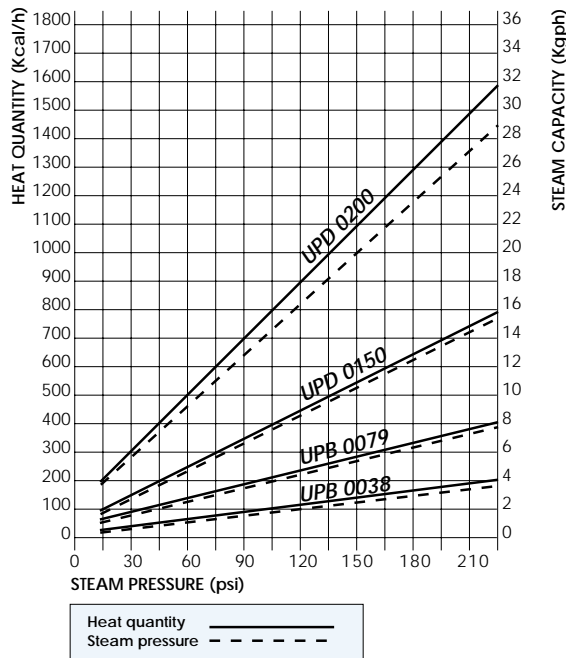
Connection: Male thread

Materials: 316 stainless steel (B3)
Fiberglass reinforced polypropylene (D6)

Code	RG	D	Flow rate (gpm)					D1	L	L1	WS
UPB0041xxSN	3/8"	0.30"	9	13	16	18	20	13/4"	31/4"	19/32"	7/8"
UPB0078xxSN	3/4"	0.39"	17	24	29	33	37	23/8"	41/2"	25/32"	13/16"

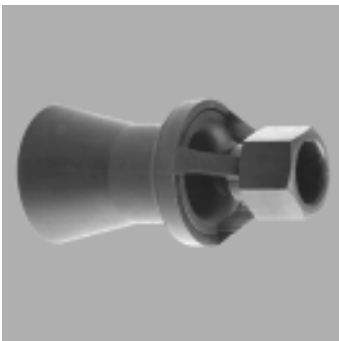
Pressure (psi) **15** **30** **45** **60** **75**

The table above shows eductor water flow rate as a function of the pressure differential between the inlet and the back pressure at the outlet.



The illustration above depicts how an eductor (in this case UPB0078) spreads out the circulation in a water tank at a depth of 20".

UPD



UPC type eductor nozzles are designed for high flow rates. They have the same features and can be applied in the same way as UPB series eductors.

Connection: Female thread

Materials: 316 stainless steel (B3)
Carbon (tool) steel (A2)
Polypropylene (D2)

Code	RF	Flow rate (gpm)					D	D1	L	WS
UPD0075xxSN	3/4"	16	23	28	32	36	13/16"	23/4"	53/4"	15/16"
UPD0150xxSN	1 1/2"	37	53	64	74	83	23/8"	41/4"	9"	23/8"
UPD0200xxSN	2"	66	93	114	135	147	3"	41/2"	13"	23/4"
UPD0300xxSN	3"	150	213	262	302	338	31/2"	71/2"	171/2"	33/4"

Pressure (psi) **15** **30** **45** **60** **75**