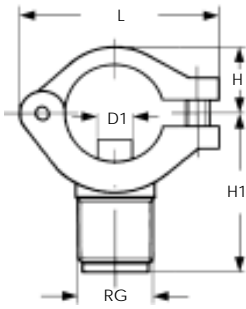


ACCESSORIES

PIPE CLAMPS

ZPB



ZPB clamps offer a quick and easy method to attach nozzles to commercial pipe.

Only one hole needs to be drilled in the pipe for mounting. No threading is required. The materials used ensure high tensile strength at elevated temperatures, and low water absorption.

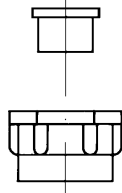
Connection: 3/8" male thread

Materials: Body: Fiberglass reinforced polypropylene (D6)
 Insert: 304 stainless steel
 Pin: 304 stainless steel
 Screw: 304 stainless steel

Maximum temperature: 195 °F

A molded retaining screw cap, made from the same plastic as the clamp, is available. The cap accommodates a variety of nozzle tips.

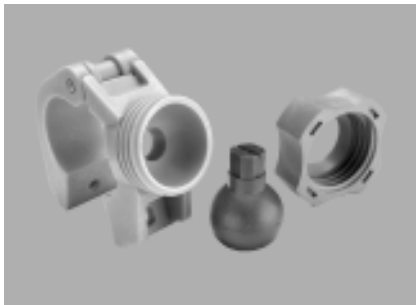
Ordering code: **VAA 0038 D6.**



VAA 0038 D6

Code	RG	PD	D1	H	H1	L
ZPB 0050 D6	3/8"	1/2"	1/4"	5/8"	17/16"	13/4"
ZPB 0075 D6		3/4"	5/16"	11/16"	11/2"	2"
ZPB 0100 D6		1"	7/16"	13/16"	13/4"	23/8"
ZPB 0125 D6		1 1/4"	1/2"	15/16"	2 1/4"	3 1/4"

ZPF

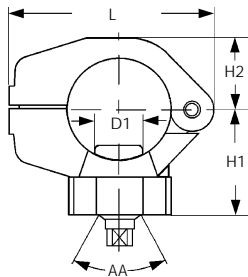


ZPF clamps are used in modern surface pre-treatment plants. They accommodate a broad range of nozzles and can be oriented as desired. They are designed to fit onto 1 1/4" and 1 1/2" pipes with only one hole needs to be drilled in the pipe for mounting. No threading is required. Nozzle maintenance is quick and easy since no tools are needed.

The clamps are used to support the HGQ molded flat-jet nozzles shown above as well as the threaded balls listed in the table to the left. For a typical assembly, see page **xx**.

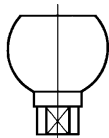
Materials: Body: Fiberglass reinforced polypropylene (D6)
 Insert: 316 stainless steel
 Pin: 316 stainless steel
 Screw: 316 stainless steel

Maximum temperature: 195 °F



Code	PD	D1	H1	H2	L	AA
ZPF A125 D6	1 1/4"	25/32"	11/16"	1 1/4"	3 1/4"	40°
ZPF B125 D6	1 1/4"	11/16"	11/16"	1 1/4"	3 1/4"	40°
ZPF A150 D6	1 1/2"	25/32"	17/8"	1 1/2"	3 1/2"	40°
ZPF B150 D6	1 1/2"	11/16"	17/8"	1 1/2"	3 1/2"	40°

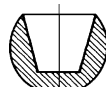
HGx



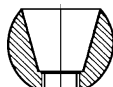
VAB 0125 D6



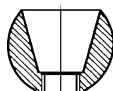
ZBA 0000 D5



ZBA B039 D5 (3/8")



ZBA B025 D5 (1/4")



	Code	Flow rate (gpm)				Color
60°	HGQ 1390 D5	6	9	11	12	Black
	HGQ 1770 D5	12	17	21	24	Violet
	HGQ 1890 D5	15	21	26	30	Brown
	HGQ 2117 D5	19	25	30	36	Yellow
	HGQ 2135 D5	21	30	36	42	Gray
	HGQ 2155 D5	26	33	41	47	Red
	HGQ 2195 D5	30	44	51	60	Green
	HGQ 2230 D5	36	51	62	71	Blue
	HGQ 2270 D5	42	59	71	83	Sky Blue
	HGQ 2337 D5	51	74	91	105	White
	HGQ 2410 D5	72	102	123	142	Pink

Pressure (psi)

7.5	15	22	30
-----	----	----	----

PIPE CLAMPS

ZPG

ZPG series pipe clamps are designed to conveniently hold spray manifolds.

Their spring design accommodates pipe of diameters from 3/4" to 1 1/2". They attach to a wall using hex-head bolts.

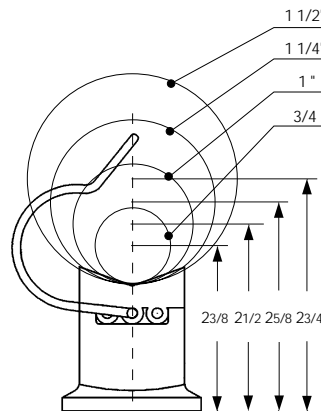
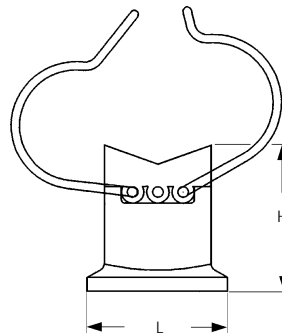
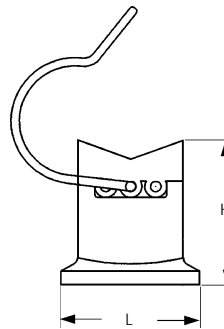
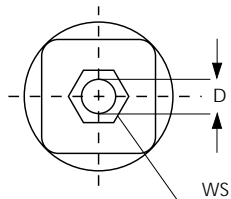
ZPG clamps are available in two versions:

- 1 spring
- 2 springs, for stronger support.

Materials: Body: Fiberglass reinforced polypropylene

Springs: 303 stainless steel

Code		DIA	D	H	L	WS
1 SPRING	2 SPRINGS					
ZPG 1075 D6	ZPG 2075 D6	3/4"	7/16"	2"	2"	11/16"
ZPG 1100 D6	ZPG 2100 D6	1"				
ZPG 1125 D6	ZPG 2125 D6	1 1/4"				
ZPG 1150 D6	ZPG 2150 D6	1 1/2"				



ONE SPRING



TWO SPRINGS

The sketch to the left shows the distance of the pipe axis from the wall for various sizes.

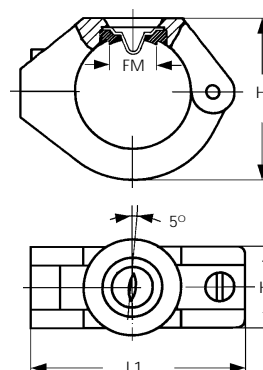
ZPG

ZPH clamps are used with type GE disc nozzles that are installed, for example, on felt washing showers. The clamps are designed such that the nozzle protrudes through the pipe, in order to cleaning of the orifice by means of a rotating brush inside the pipe. (See page 64 for details.)

Materials: Glass reinforced polypropylene

Maximum pressure: 100 psi

Code	DIA	FM	H	H1	L1
ZPH 0150 D6	2"	3/4"	23/4"	15/16"	35/8"



ACCESSORIES

PIPE CLAMPS

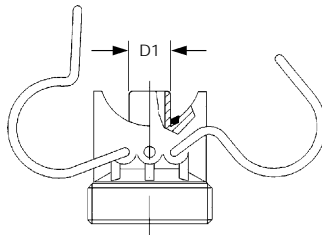
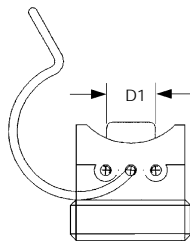
ZPL/ZPN



ZPL



ZPN



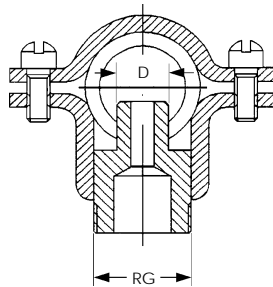
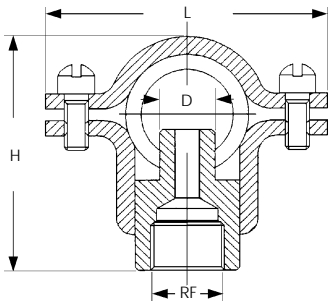
ZPL clamps are similar to the ZPF clamps described on page 76, except that they use spring clips instead of a split body for clamping. They use the same accessories and operate in the same manner as the ZPF style.

Materials: Body: Fiberglass reinforced polypropylene
 Spring: 316 stainless steel
 Maximum pressure: 30 psi

Code	PD	D1
ZPL 0100 D6	1"	9/16"
ZPL A125 D6	1 1/4"	25/32"
ZPL B125 D6	1 1/4"	21/32"
ZPL 0150 D6	1 1/2"	25/32"
ZPN A125 D6	1 1/4"	25/32"
ZPN B125 D6	1 1/4"	21/32"
ZPN 0150 D6	1 1/2"	25/32"

O-Ring Code: XZP 5128 E8
 Retaining Cap Code: VAB 0125 D6

ZPM



ZPM type clamps consist of two pressed stainless steel pieces plus a nipple and a gasket. The assembly is secured to a pipe by two screws. Its metal construction makes it useful at pressures higher than can be tolerated by plastic clamps.

Connection: Female thread
 Male thread

Materials: Body: Zinc-coated steel (A8)
 304 stainless steel (B2)
 Screws: 304 stainless steel
 Nipple: 303 stainless steel (B1)
 Brass (T1)
 Gasket: Synthetic rubber

Maximum pressure: 250 psi



BODY

XX	MATERIAL
A8	Zinc-coated steel
B2	304 stainless steel

NIPPLE THREAD SIZE

Y	SIZE
A	1/8" F
B	1/4" F
C	3/8" F
D	1/2" F
U	3/8" M

NIPPLE MATERIALS

W	MATERIAL
A	Brass
B	303 SS
C	316 SS

Code	RF/RG	PD	Maximum pressure (psi)	Maximum flow rate (gpm)	D	H	L
ZPM 0050xxYW	1/8"	1/2"	250	42	1/4"	9/16"	7/8"
ZPM 0050xxYW	1/4"					17/8"	
ZPM 0050xxYW	3/8"						
ZPM 0075xxYW	1/8"	3/4"	250	42	1/4"	13/4"	21/4"
ZPM 0075xxYW	1/4"					2"	
ZPM 0075xxYW	3/8"						
ZPM 0100xxYW	1/8"	1"	250	42	1/4"	13/4"	21/2"
ZPM 0100xxYW	1/4"					2"	
ZPM 0100xxYW	3/8"						
ZPM 0125xxYW	1/4"	1 1/4"	130	170	11/16"	25/8"	23/4"
ZPM 0125xxYW	3/8"						
ZPM 0125xxYW	1/2"						
ZPM 0150xxYW	1/4"	1 1/2"	130	170	11/16"	23/4"	31/2"
ZPM 0150xxYW	3/8"						
ZPM 0150xxYW	1/2"						
ZPM 0200xxYW	1/4"	2"	130	170	11/16"	33/8"	4"
ZPM 0200xxYW	3/8"						
ZPM 0200xxYW	1/2"						
ZPM 0250xxYW	1/4"	2 1/2"	130	170	11/16"	4"	43/8"
ZPM 0250xxYW	3/8"						
ZPM 0250xxYW	1/2"						

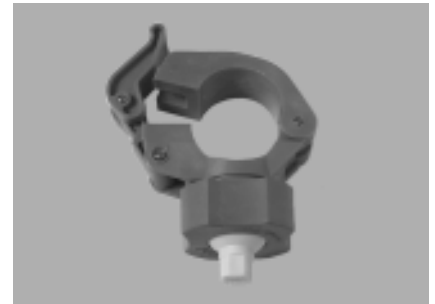
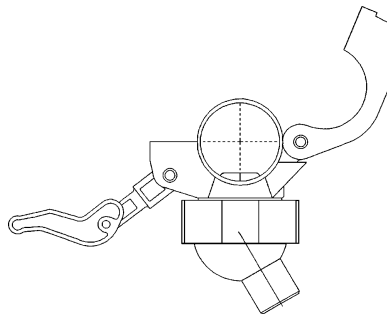
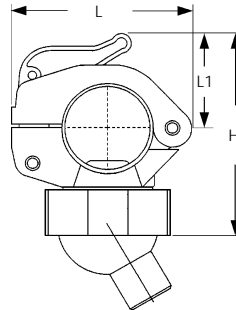
PIPE CLAMPS

ZPQ

The new **ZPQ** series of pipe clamps make assembling and disassembling nozzles on spray manifolds in surface treatment operations quick and easy.

A patented cam and lever system quickly mounts the clamp onto a pipe without tools. The cam and lever are securely fastened with stainless steel pins. This one-piece construction prevents the loss of parts during assembly and disassembly.

ZPQ clamps use the same locknut and ball nozzles as used with the ZPL, ZPN and ZPF clamps.



- Materials
- Body: Fiberglass reinforced polypropylene
 - Lock nut: Fiberglass reinforced polypropylene
 - Cam: Fiberglass reinforced polypropylene
 - Lever: Fiberglass reinforced polypropylene
 - Pins: 316 stainless steel
 - Ball nozzles: polypropylene
 - O-ring: NBR rubber (maximum temperature: 105 °F)
Viton rubber (maximum temperature: 160 °F)
 - Seal: Soft polypropylene

Max pressure: 60 psi at 68 °F

Max temperature: 160 °F

All materials are silicone-free and do not contain any slip or anti-blocking agents.

Code	PD	DIA	H	H1	L
ZPQ A125 D6	1 1/4"	3/4"	35/8"	15/8"	3 1/4"
ZPQ B125 D6	1 1/4"	5/8"	35/8"	15/8"	3 1/4"
ZPQ A150 D6	1 1/2"	3/4"	33/4"	13/4"	33/4"
ZPQ B150 D6	1 1/2"	5/8"	33/4"	13/4"	33/4"

