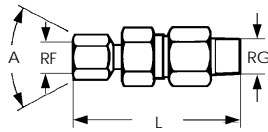


ACCESSORIES

SWIVEL JOINTS

ZRA



ZRA swivel joints accommodate a wide range of nozzles. The orientation of the unit is fixed by tightening the hexagonal nut.

Connection: Female thread (RF — to nozzle)
Male thread (RG — to feed line)

Materials: 316 stainless steel (B3)
Brass (T1)

Maximum pressure: 135 psi

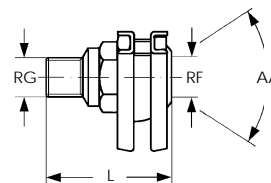
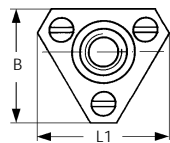
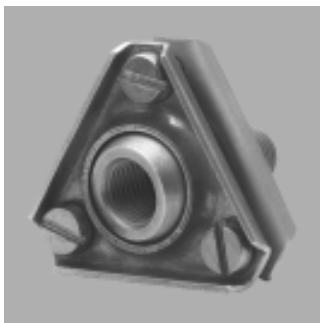
This type of swivel joint is available in two additional styles:

ZRB: Female thread to feed line

ZRC: Welding flange to feed line

Code	RG	RF	L	AA
ZRA1212xxSN	1/8"	1/8"	11/2"	50°
ZRA2525xxSN	1/4"	1/4"	21/4"	50°
ZRA2626xxSN	1/4"	1/4"	21/2"	60°
ZRA3826xxSN	3/8"	1/4"	21/2"	60°
ZRA3838xxSN	3/8"	3/8"	23/4"	60°
ZRA5050xxSN	1/2"	1/2"	27/8"	40°
ZRA7575xxSN	3/4"	3/4"	35/8"	40°

ZRP



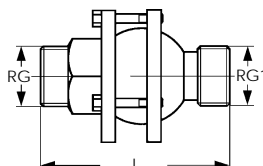
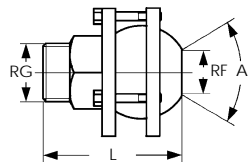
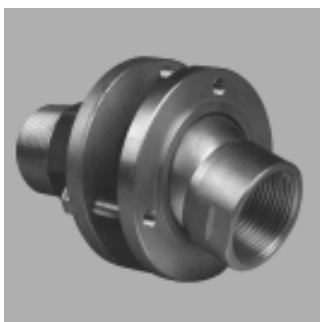
ZRP swivel joints accommodate a wide range of nozzles. The orientation of the unit is fixed by tightening down the the spherical section between the two triangular flanges.

Connection: Female thread (RF — to nozzle)
Male thread (RG — to feed line)

Materials: Flanges: 304 stainless steel (B2)
Brass (T1)
Nipples: 304 stainless steel (B2)
Brass (T1)
Nuts/
screws: 304 stainless steel (B2)
Sphere: 304 stainless steel (B2)
Brass (T1)

Code	RG	RF	L1	B	L	AA
ZRP1212xxSN	1/8"	1/8"	13/8"	15/16"	13/8"	40°
ZRP2512xxSN	1/4"	1/8"	13/8"	15/16"	13/8"	40°
ZRP2525xxSN	1/4"	1/4"	13/4"	2"	13/4"	40°
ZRP2538xxSN	1/4"	3/8"	13/4"	2"	13/4"	40°
ZRP3825xxSN	3/8"	1/4"	13/4"	2"	13/4"	40°
ZRP3838xxSN	3/8"	3/8"	13/4"	2"	13/4"	40°
ZRP5038xxSN	1/2"	3/8"	13/4"	2"	13/4"	40°
ZRP5050xxSN	1/2"	1/2"	21/2"	3"	21/2"	40°

ZRQ



ZRQ swivel joints accommodate larger size nozzles. The orientation of the unit is fixed by tightening the clamping flanges.

Connection: Female thread (RF — to nozzle)
Male thread (RG — to feed line)

Materials: 316 stainless steel (B3)
Brass (T1)

This type of swivel joint is also available as type **ZRR**, which has a male thread to the nozzle.

Code	RG	RG1	RF	L	D	AA
ZRQ8080xxSN	1"	-	1"	31/2"	35/8"	40°
ZRQ8282xxSN	11/4"	-	11/4"	51/4"	35/8"	40°
ZRQ8482xxSN	11/2"	-	11/4"	51/4"	35/8"	40°
ZRR8282xxSN	11/4"	11/4"	-	51/4"	35/8"	40°
ZRR8284xxSN	11/2"	11/4"	-	5"	35/8"	40°
ZRR8484xxSN	11/2"	11/2"	-	5"	35/8"	40°
ZRR8686xxSN	2"	11/2"	-	8"	61/4"	40°
ZRR8888xxSN	21/2"	21/2"	-	9"	61/4"	40°